

# CEPHIRUS 4500 V

## Series general data CEPHIRUS



THIS PRODUCT MEETS THE EFFICIENCY VALUES REQUIRED BY ErP 2013/2015

### CEPHIRUS

Energy recovery unit with air-air cross flow F7/F7

#### GENERAL FEATURES:

- Horizontal or vertical compact unit, customizable on site due to removable panels.
- Casing with double skin panels insulated by 25 mm of polyurethane foam with a coefficient of thermal conductivity of 0,023 W/(m.K).
- Static exchanger with cross flow, in aluminium.
- Inlet and outlet filter holder with F7 filter. There is the chance to assemble an additional level inside (F7/F9).

#### MANUFACTURING FEATURES:

##### CHASIS:

- Low and extruded anodized aluminium profiles with reinforced corners made of aluminium in horizontal configuration (standard).

##### CASING:

- Double skin steel panels, white lacquered, sandwiched on injected polyurethane foam insulation, thickness 25mm.
- Panels with silicone seal for outdoors.
- Circular connection with double lip deal made of rubber.
- Pressure taps for measuring the pressure drop and filter clogging.
- Access for lateral and lower side inspection and maintenance.
- Condensates evacuation system.

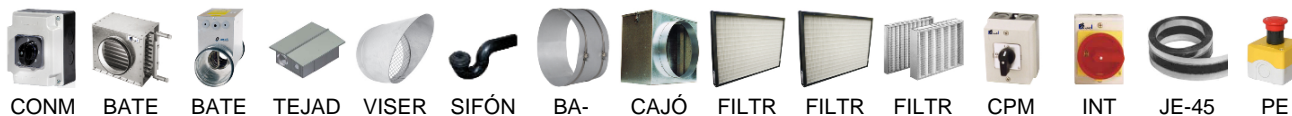
##### FANS:

- Double inlet centrifugal fans with forward impeller and direct belt-driven motor.
- 4 speeds 230V-1-50Hz: Cephirus 500 and 900.
- 3 speeds 230V-1-50Hz: Cephirus 2000 and 3400.
- 1 speeds 400V-3-50Hz: Cephirus 4500 and 5600.

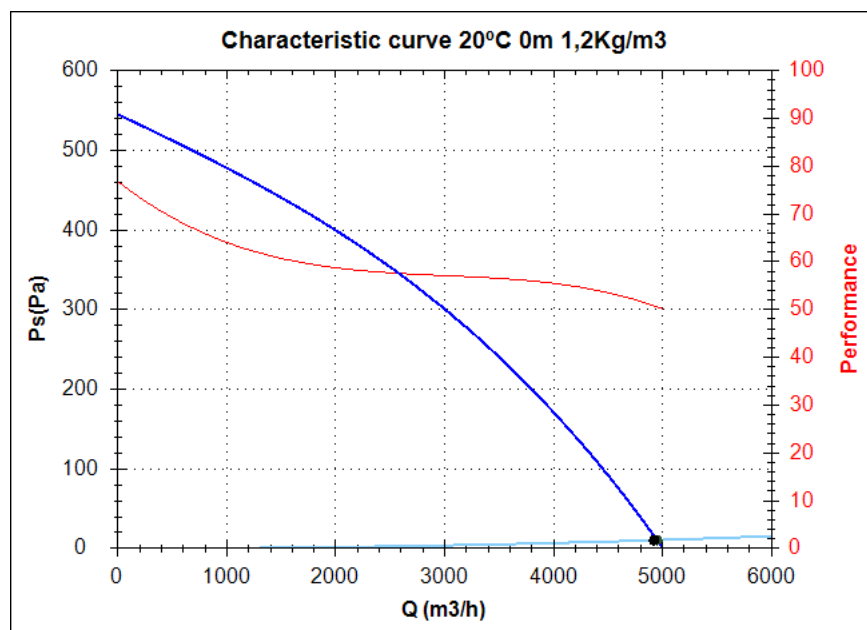
##### PLATES EXCHANGER:

- Static exchanger with cross flow in aluminium. Efficiency up to 60%.

## Series accessories CEPHIRUS



## Characteristic curve



### Design point

Q (m3/h)	4922,64
Ps(Pa)	10,47

### Service point

Impeller rpm	
Max. temp.(°C)	50
Q (m3/h)	4951,47
Ps(Pa)	10,60
Pd(Pa)	55,07
Pt(Pa)	65,67
Air speed(m/s)	9,58
Perf.(%)	50,62
SWL dB(A)	83 (INDUCT)
SPL dB(A)	69 (INDUCT)
Distance(m)	1,5

## Technical data

Impeller rpm	
Motor rpm	1500
Approx. weight(kg)	171
Maximum flow rate(m3/h)	5000

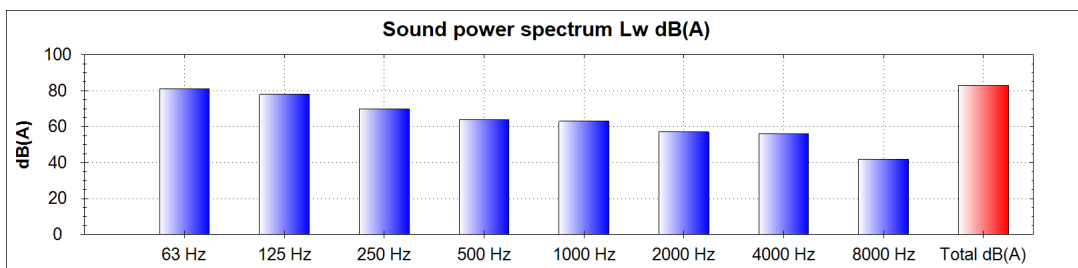
Power(kW)	0,75x2
Imax 230V(A)	-
Imax 400V(A)	3,1x2
Imax 690V(A)	-

# CEPHIRUS 4500 V

## Acoustics to the service point (INDUCT)

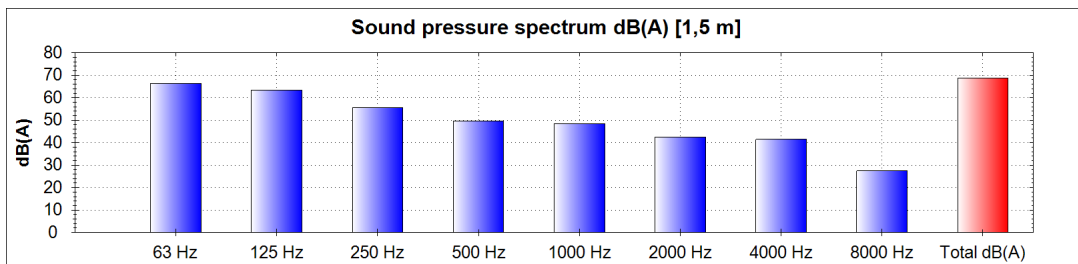
### Power dB(A)

63 Hz	81
125 Hz	78
250 Hz	70
500 Hz	64
1000 Hz	63
2000 Hz	57
4000 Hz	56
8000 Hz	42
Total dB(A)	83



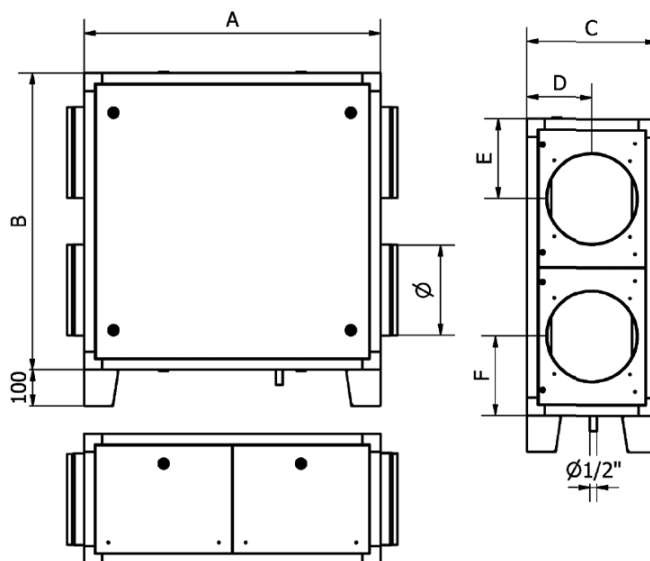
### Pressure dB(A) [1,5 m]

63 Hz	66
125 Hz	63
250 Hz	55
500 Hz	49
1000 Hz	48
2000 Hz	42
4000 Hz	41
8000 Hz	27
Total dB(A)	69



## dimensions diagram

- Vertical configuration / Configuración vertical



### Dimensions (mm)

A=1300	B=1200	C=855	D=427,5	E=305	F=305	Ø=450
--------	--------	-------	---------	-------	-------	-------

## Wiring diagram



TM => NC contact, open when motor is over-heated  
TM => Contacto NC, apertura si el motor se sobre-calienta