

# CEPHIRUS LP 3500 H + BP

## Series general data CEPHIRUS LP

THIS PRODUCT MEETS THE EFFICIENCY VALUES REQUIRED BY ErP 2013/2015

CEPHIRUS LP  
Low profile energy recovery unit with cross flow



### GENERAL FEATURES:

- Horizontal or vertical compact unit.
- Casing made of galvanized steel.
- Static exchanger with cross flow, in aluminium.
- Inlet and outlet filter holder with F7 filter. There is the chance to assemble an additional level (F7/F9).

### MANUFACTURING FEATURES:

- CHASIS
- Made of galvanized aluminium.

### CASING:

- Simple skin steel panel 10mm.
- External coating with adhesive thermoacoustic insulating polyethylene thickness 5mm.
- Circular connection with double lip seal made of rubber.
- Pressure taps for measuring the pressure drop and filter clogging.
- Side access for inspection and maintenance.
- Condensates evacuation system.

### FANS:

- Double inlet centrifugal fans with forward impeller and direct belt-driven motor.
- 4 speeds 230V-1-50Hz: Cephirus 400 and 800.
- 3 speeds 230V-1-50Hz: Cephirus 1600, 2500 and 3500.

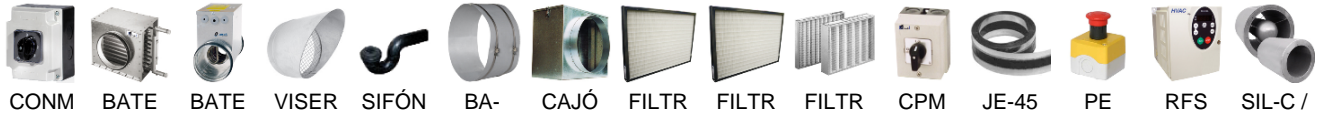
### PLATES EXCHANGER:

- Static exchanger with cross flow in aluminium. Efficiency up to 60%.

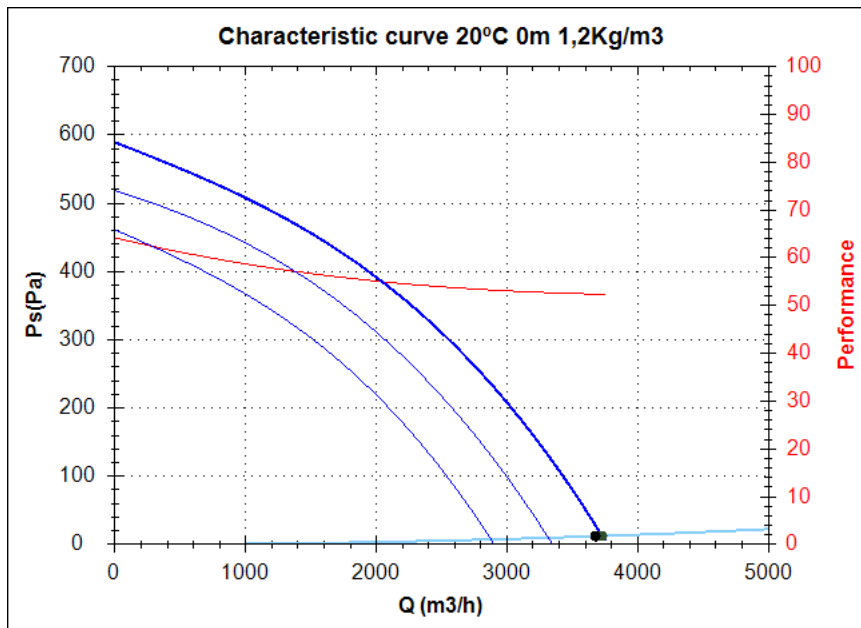
### FILTERS:

- F7 filter: polypropylene filtering fabric with low pressure drop (inlet and outlet).

## Series accessories CEPHIRUS LP



## Characteristic curve



### Design point

Q (m <sup>3</sup> /h)	3676,13
Ps(Pa)	12,22

### Service point

Impeller rpm	V3
Max. temp.(°C)	50
Q (m <sup>3</sup> /h)	3727,87
Ps(Pa)	12,57
Pd(Pa)	40,73
Pt(Pa)	53,30
Air speed(m/s)	8,24
Perf.(%)	52,37
SWL dB(A)	66 (INDUCT)
SPL dB(A)	51 (INDUCT)
Distance(m)	1,5

## Technical data

Impeller rpm	V3
Motor rpm	
Approx. weight(kg)	168
Maximum flow rate(m <sup>3</sup> /h)	2900/3750

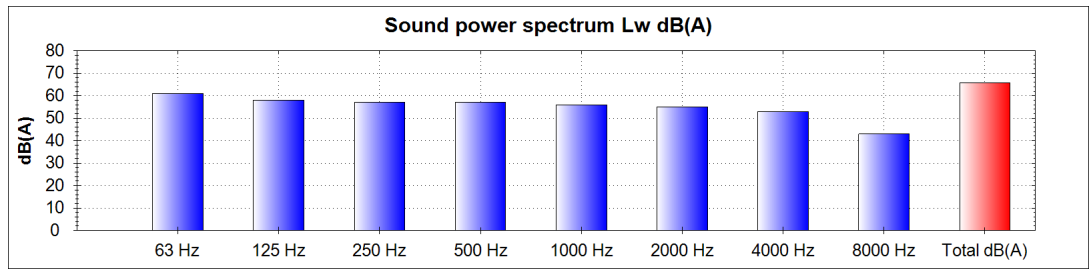
Power(kW)	0,75x2
Imax 230V(A)	8,1x2
Imax 400V(A)	-
Imax 690V(A)	-

# CEPHIRUS LP 3500 H + BP

## Acoustics to the service point (INDUCT)

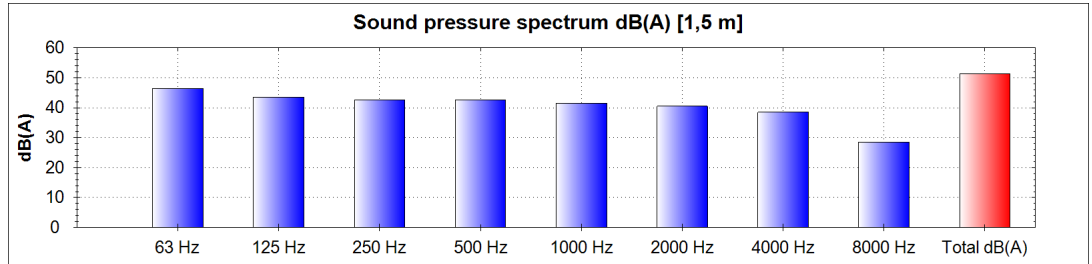
### Power dB(A)

63 Hz	61
125 Hz	58
250 Hz	57
500 Hz	57
1000 Hz	56
2000 Hz	55
4000 Hz	53
8000 Hz	43
Total dB(A)	66



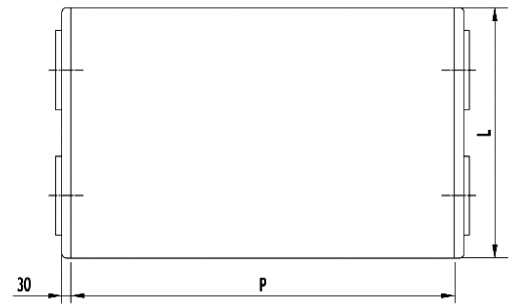
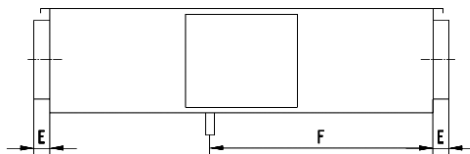
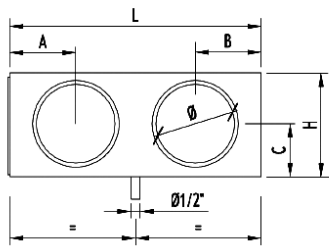
### Pressure dB(A) [1,5 m]

63 Hz	46
125 Hz	43
250 Hz	42
500 Hz	42
1000 Hz	41
2000 Hz	40
4000 Hz	38
8000 Hz	28
Total dB(A)	51



## dimensions diagram

### Horizontal configuration / Configuración horizontal



### Dimensions (mm)

A=325	B=285	C=290	E=50	F=870	H=550	L=1300	Ø=400	P=1510
-------	-------	-------	------	-------	-------	--------	-------	--------

## Wiring diagram

